

# The Boxwood



The Boxwood Plan  
Lodge Style Elevation

- 1st Floor = 1498 SF
- 2nd Floor = 1726 Sf
- Total Conditioned = 3224 SF
- Garage SF = 574 SF
- 4/5 bedrooms, 2 1/2 baths

Our Boxwood Plan offers something for everyone. Featuring an open kitchen & family room, the 1<sup>st</sup> floor has an optional bedroom, walk in pantry, formal dining room and an office. The 2<sup>nd</sup> floor includes a luxurious master suite, jack n jill bath, plus a bonus room or 4<sup>th</sup> bedroom. The Boxwood can be customized in numerous ways to meet your needs.

## Contact Us:

Phone: 804-837-8110

Email: [info@vajack.com](mailto:info@vajack.com)



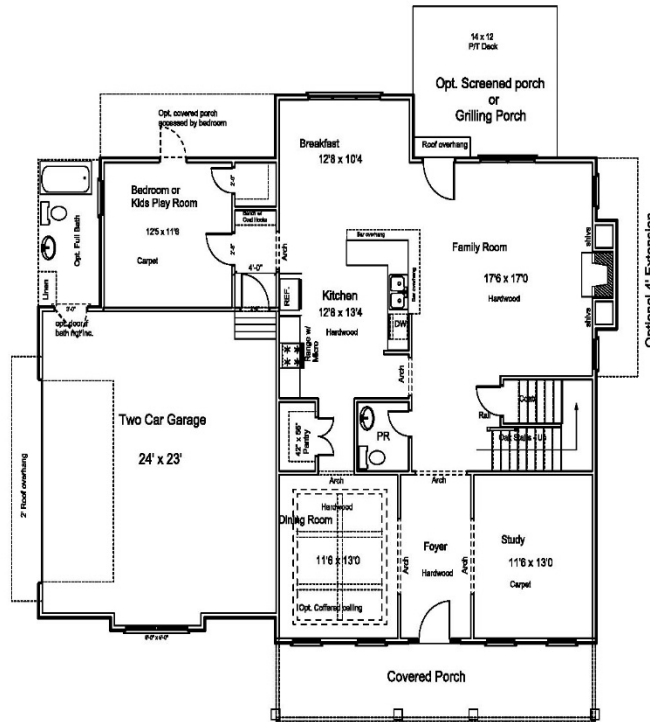
Traditional Elevation

**Virginia Jack Builders**

Custom Homes, Built For The Way You Live!

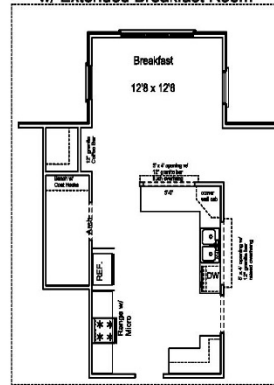
[www.VAJack.com](http://www.VAJack.com)

# The Boxwood

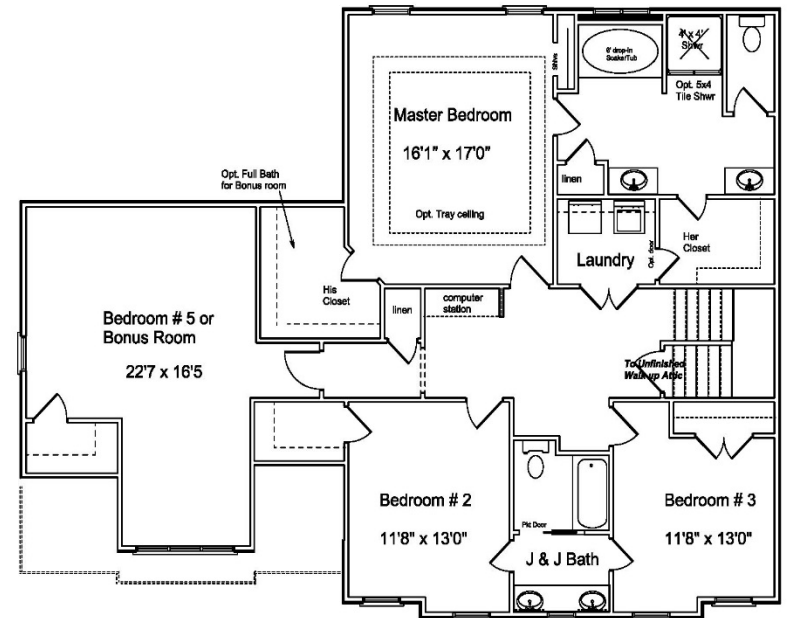


**The Boxwood - First Floor Plan**

**Optional Grand Kitchen w/ Extended Breakfast Room**



The Boxwood Plan  
Lodge Style Elevation



**The Boxwood - Second Floor Plan**

All details and illustrations are approximate and may vary from actual plans and specifications. Contact us today to start designing your dream home!

[Info@vajack.com](mailto:Info@vajack.com)