

Virginia Jack

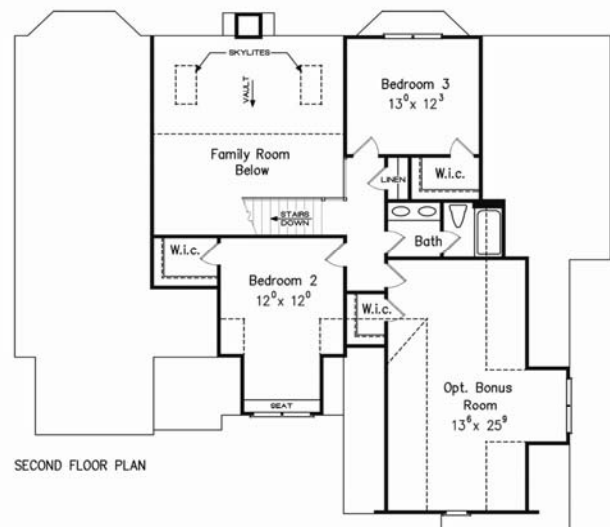
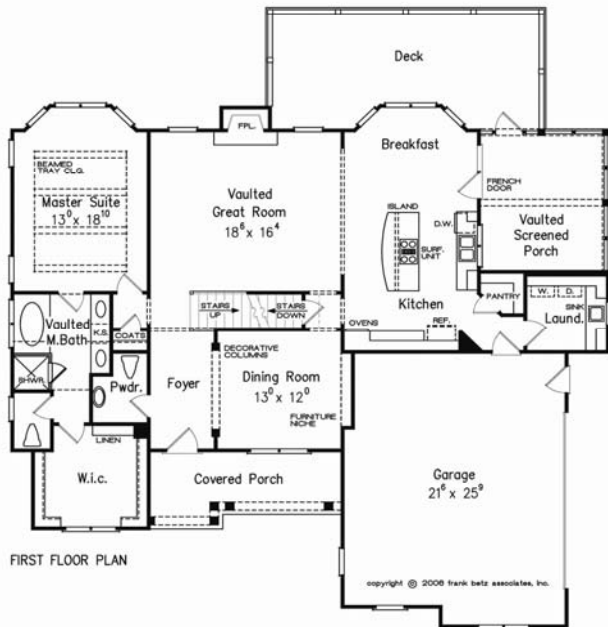
BUILDERS, INC.



SPRINGMILL

1st Floor 1618 sq. ft.
 2nd Floor 602 sq. ft.
 Total 2220 sq. ft.
 Opt. Bonus 394 sq. ft.

Overall Dimensions
 58'-0" x 53'-6"



Floorplans and elevations are subject to change. Floorplan dimensions are approximate. Consult working drawings for actual dimensions and information. Elevations are artists' conceptions.