

Virginia Jack Builders

The Merrill Park — Signature

1st Floor = 1516 SF

2nd Floor = 1648 Sf

Total Conditioned = 3164 SF

5 bedrooms, 4 1/2 baths.



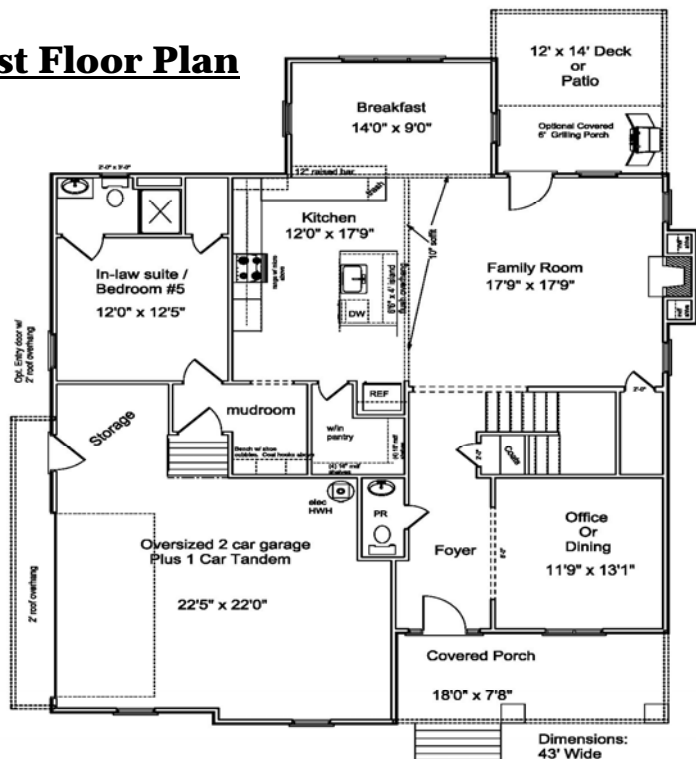
Harpers Mill pricing Starts in the \$430's

On your lot pricing contact VA Jack

Builders

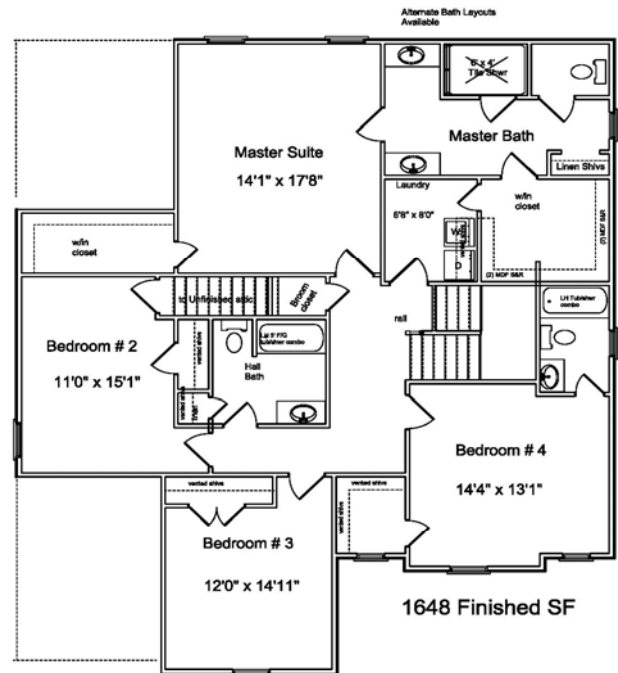
2nd Floor Plan

1st Floor Plan



The Merrill Park - Signature
1st Floor Layout

1st Floor Finished SF = 1516 SF
2nd Floor Finished SF = 1648 SF



The Merrill Park - Signature
Second Floor Plan

Contact: Kevin Russell

President , Virginia Jack Builders, Inc.

804-837-8110, email kevin@vajack.com

www. VAJack.com

